



Print Release Client

Deployment Guide

© 2009 PrinterOn Corporation

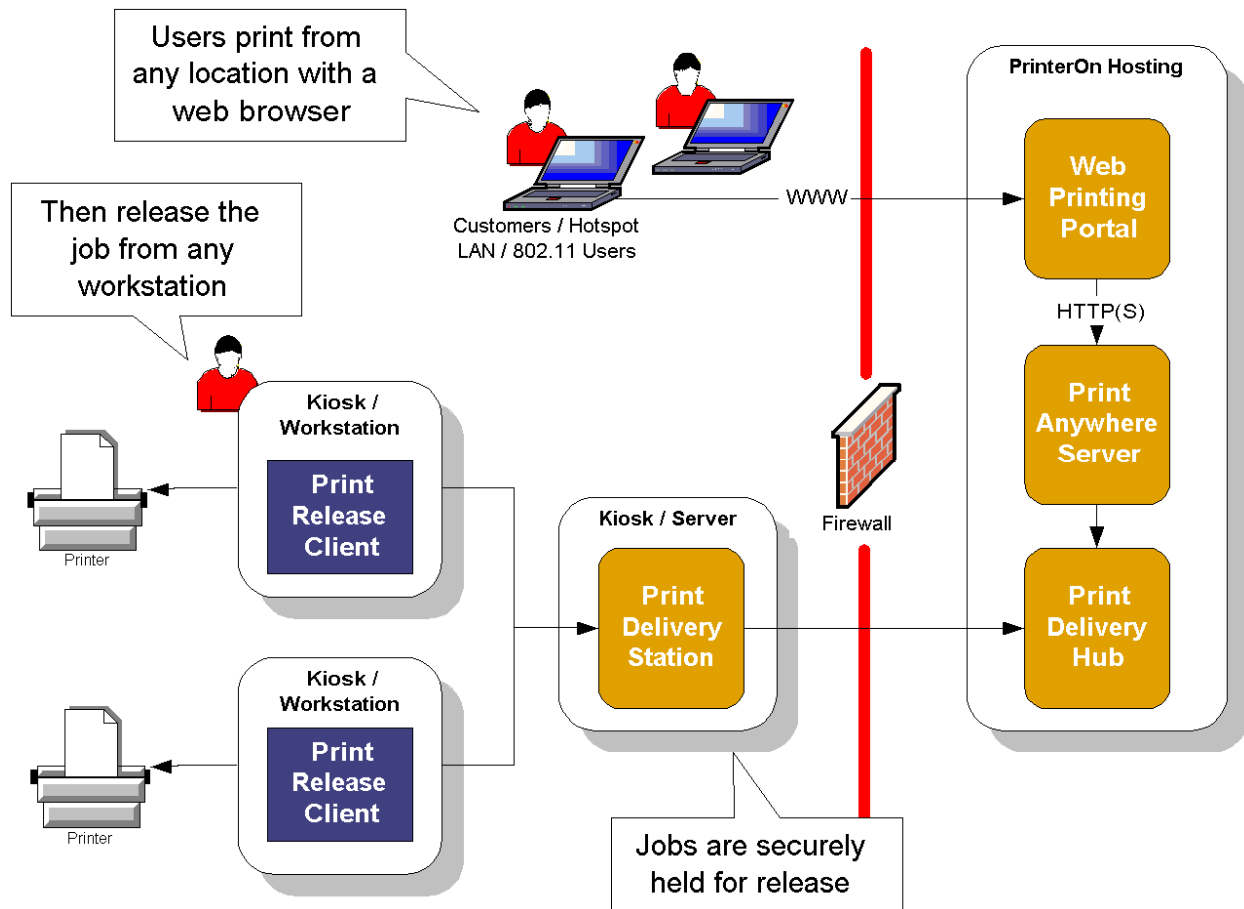
Table of Contents

Introduction	3
1 Requirements	4
1.1 Hardware Requirements	4
1.2 Software Requirements	4
2 Steps for deploying Print Release Client	5
2.1 Install and Configure Print Delivery Station (PDS)	5
2.2 Install and configure Print Release Client (PRC)	8
2.2.1 Configure Server Connection Settings:	9
2.2.2 Configure Printing Mode Settings:	9
2.2.3 Configure PrinterOn Release Launcher Settings:	9
2.3 Mapping Printer Names	11
2.4 Test Your Deployment	12
Appendix A: Deployment Options	13
Appendix B: Deployment Checklist	15

Introduction

Print Release Client (PRC) is a desktop application which allows users to easily manage and release print jobs that have been securely queued on a Print Delivery Station server.

Figure 1: A typical Print Release Client deployment.



This software is designed to connect to the existing family of PrinterOn products, and enable new user experiences and deployment options. For example, by using compatible printers at large venues, it is now possible to release a job to any printer of convenience for the user.

Providing a user-friendly interface to the Print Delivery Station service, PRC is also designed for compatibility with existing print cost recovery systems. Workstations and kiosks that use special software to monitor and charge users for print services can also recognize print jobs released by the PRC in the same manner as those directly printed by other local desktop applications.

This guide covers the general minimum system configuration requirements for several related PrinterOn components in order to integrate the Print Release Client software into a printing solution. Please refer to the specialized documentation for each of these components for detailed instructions.

1 Requirements

1.1 Hardware Requirements

- Must have network access (HTTP over TCP/IP) to the machine hosting the Print Delivery Station (PDS) software
- To permit users to print jobs at any one of several printers at a location, compatible or identical printer models must be used. Please see Appendix A for deployment examples.

1.2 Software Requirements

- PrinterOn Print Delivery Station (PDS) version 2.4 AF or higher must be installed on one machine on the network, to act as the “server”. Where feasible, it is recommended that PDS be installed on a “server” PC, which is more reliable or protected than user workstations.

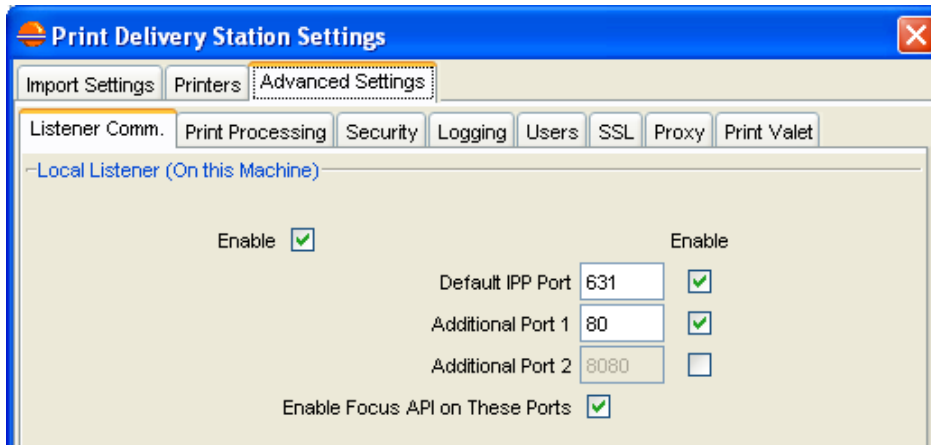
2 Steps for deploying Print Release Client

PrinterOn has several methods of securing and releasing print jobs, including “by Release Code”. This is a simple pass-phrase, generated by PrinterOn or submitted by the user with their print job(s). The Job Release Code is used by the Print Release Client to locate and release jobs associated with the supplied Release Code. Your PrintSpots Print portal must be configured to use Release Codes to be compatible with the Print Release Client.

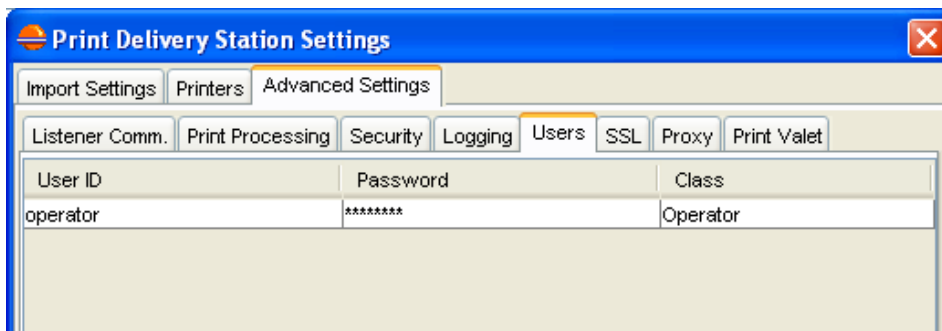
2.1 Install and Configure Print Delivery Station (PDS)

Prior to deploying Print Release Clients, you should install and test the PDS server software. Ensure that print jobs can be submitted (with release codes) via the PrintSpots Print Portal and received by PDS using its built in queue monitor.

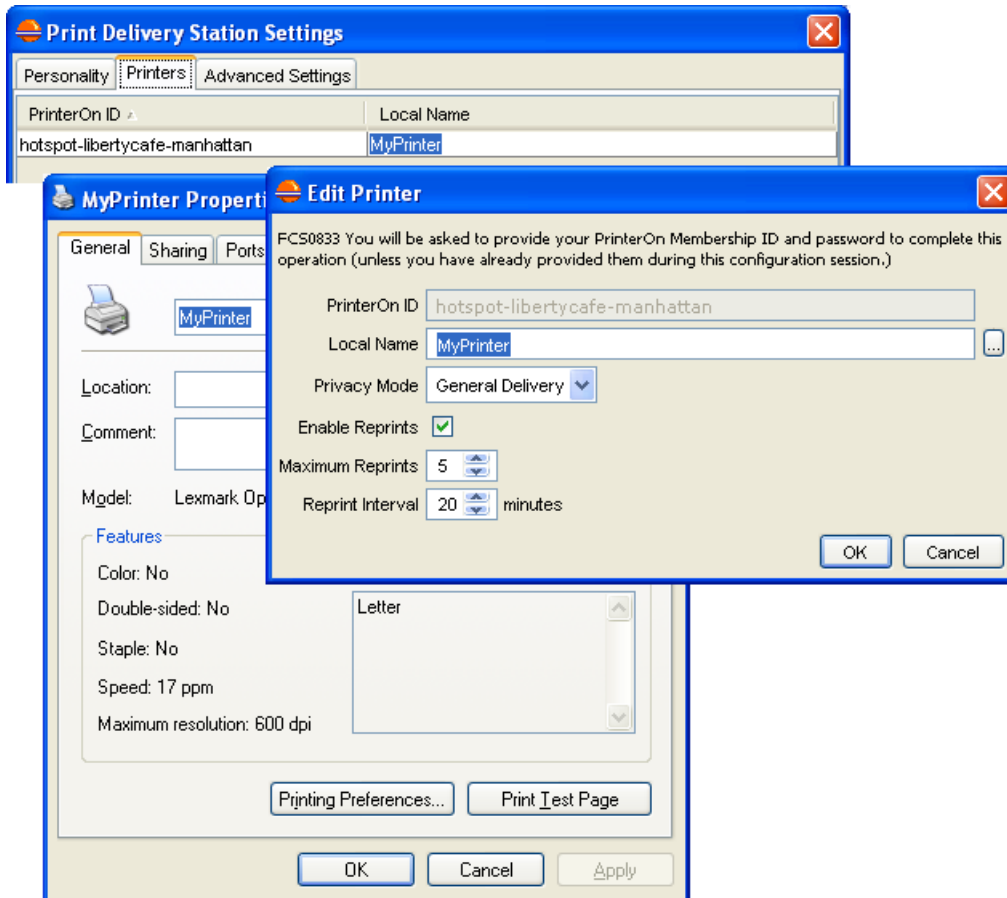
1. Install PrinterOn Print Delivery Station (PDS) on one PC on your network. Where feasible, it is recommended that PDS be installed on a “server” PC, which is more reliable or protected than user workstations. Please refer to the appropriate PDS documentation for complete instructions.
2. Configure the PrinterOn printers for PDS, usually by setting the PDS personality type and downloading your configuration file.
3. Submit a test job using the Web portal – the job should then be visible in the PDS Queue Monitor
4. Enable the PDS client API by checking the “Enable” & “Enable Focus API on These Ports” boxes, on the PDS “Advanced Settings - Listener Comm.” tab.

Figure 3.1b: Enabling the PDS client API

- Optionally, add one or more PDS operators (name / password) via the "Advanced Settings - Users" tab. If configured, operator credentials can be used remotely from the PRC to manage all jobs, in case users forget their release codes, or need assistance with their print jobs.

Figure 3.1c: Adding operators to PDS

5. Configure PDS Printer Names. This step is explained in more detail in part 4 - "Mapping Printer Names". Basically, each PDS printer's "Local Name" must be carefully matched to the same Windows "Printer Names" that PRC can access on the client PCs.
6. Ensure that all PDS printers are configured for "General Delivery" Privacy Mode on the PDS Edit Printer dialog. This allows PRC to manage jobs using a release code.

Figure 3.1d: Editing PDS Printers

- For the purpose of initial testing, you may be able to connect PDS to a local or network printer, and release your test jobs using the PDS Queue Monitor. Ensure the configuration of the printer for paper size, duplex and make / model on the PrinterOn web site.

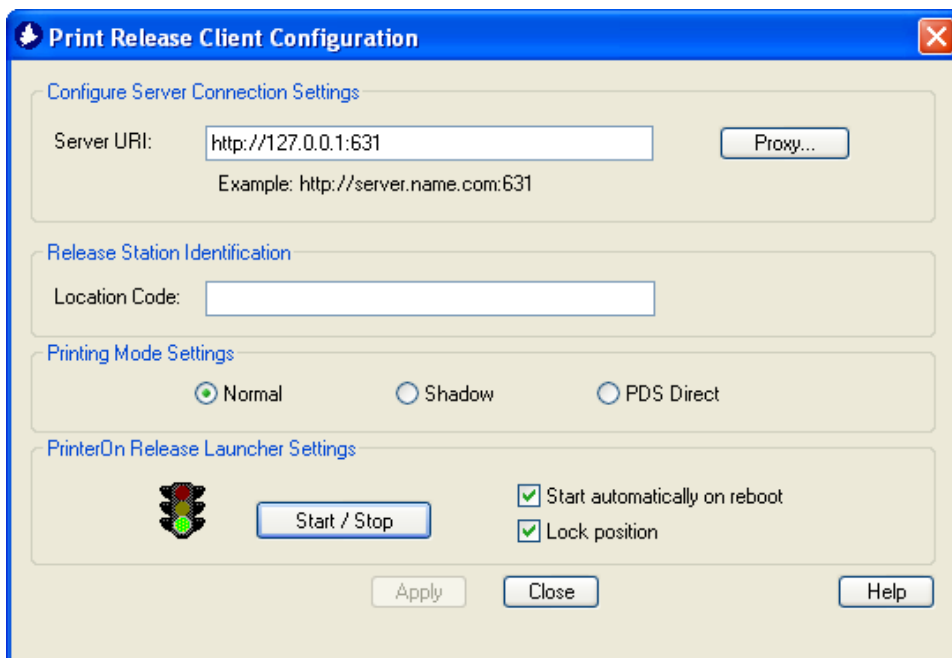
2.2 Install and configure Print Release Client (PRC)

The Print Release Client can be installed on multiple kiosk / workstations, including the PC which is acting as the PDS “server”, wherever you wish user to have access to queued documents. PRC requires local or network connections to the desired output printer(s). See Appendix A for deployment options.

Locate and run the **Print ReleaseClient.exe** installation wizard from the kiosk / workstation.

- The install wizard installs the PrinterOn Desktop Launcher by default. This is an optional helper application, which keeps a highly visible “button” on the desktop, making it easier for users to run the PRC. The Launcher can be enabled / disabled from the Configuration tool.
- The PRC install includes a Configuration tool for system administrators to control the main application features:

Figure 3.2a: PRC Configuration Tool



2.2.1 Configure Server Connection Settings:

If your PDS Print Release web page resides on a different server than your desktop icon, you can specify its address.

1. Open the PDS Desktop Icon Configuration window (Start>All Programs>PrinterOn Corporation>Print Release Client>Launch Print Release Client Config).
2. Select the **Server URI** text box.
3. Enter the IP address of your Print Delivery Station computer followed by port 8181. (i.e. http://172.16.10.1:8181)
4. Click Apply. Your Current Server Connection Settings will update.
5. Click Close.

2.2.2 Configure Printing Mode Settings:

Normal

The Print Release Client will use the most common method of printing. Print jobs will be delivered directly to the configured print queue without modifications.

Shadow

The Print Release Client will use a special method of printing which helps some 3rd party print monitoring software detect print jobs from the PRC.

PDS Direct

The Print Release Client will direct the Print Delivery Station to release jobs directly to the printer. In this scenario, jobs are not downloaded to the Print Release Client before being printed. If configured, using PDS Direct, the Print Delivery Station must be configured to print to the desired printer and a locally installed print driver or direct network access to the printer.

2.2.3 Configure PrinterOn Release Launcher Settings:

TO LOCK THE POSITION OF THE ICON:

By default, the Icon is configured to allow users to move it around the screen (Right-click on Icon > Left click on Move command > Drag Icon with left mouse button). Administrators may decide to disable this feature by locking the Icon's position. Once you have situated the Icon in the desired location on the screen:

1. Open the PDS Desktop Icon Configuration window (Start>All Programs>PrinterOn Corporation>Print Release Client>Launch Print Release Client Config).
2. Under PrinterOn Release Launcher Settings, check the **Lock position** box.
3. Click Apply.

TO DISABLE THE ICON:

If required (such as when your service is temporarily unavailable), the Desktop Icon can be disabled (hidden) without having to uninstall it from the computer:

1. Open the PDS Desktop Icon Configuration window (Start>All Programs>PrinterOn Corporation>Print Release Client>Launch Print Release Client Config).
2. Under PrinterOn Release Launcher Settings, click **Stop**.
3. Click Apply.

TO START THE LAUNCHER ICON AUTOMATICALLY:

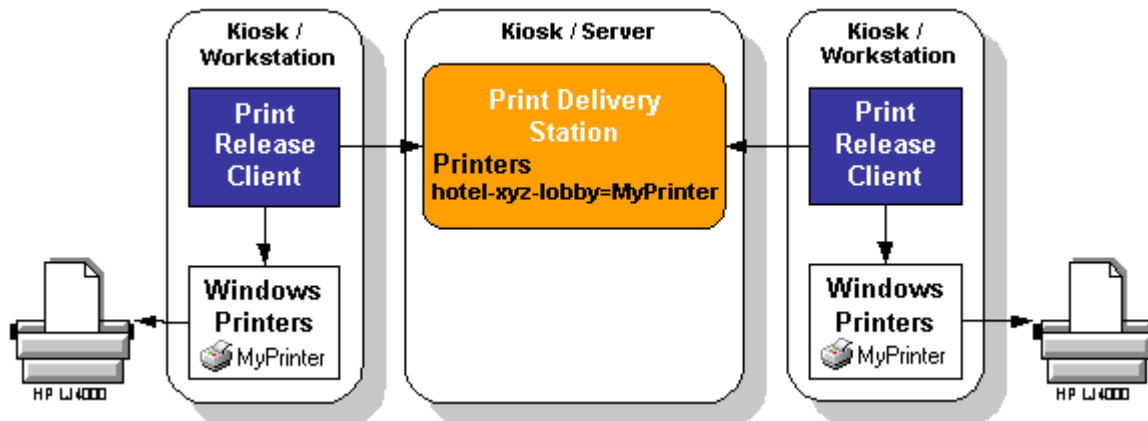
The Print Release Client Launcher Icon can be configured to start automatically every time the computer is rebooted.

1. Open the PDS Desktop Icon Configuration window (Start>All Programs>PrinterOn Corporation>Print Release Client>Launch Print Release Client Config).
2. Under PrinterOn Release Launcher Settings, the **Start automatically on reboot** box.
3. Click Apply.

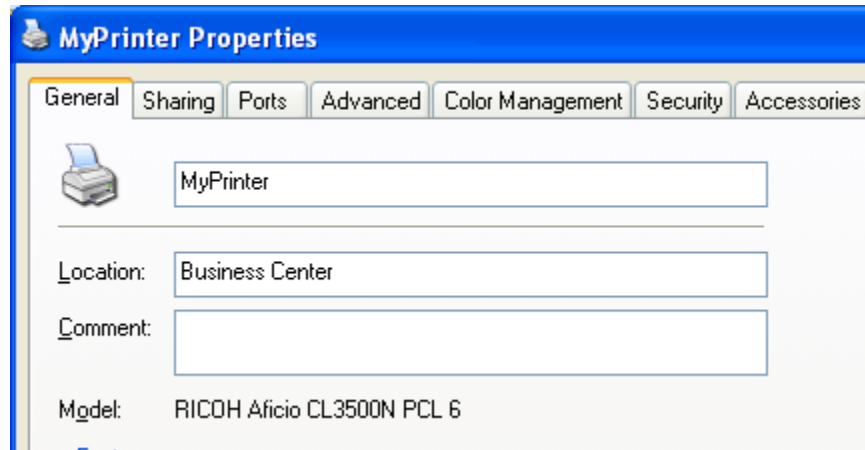
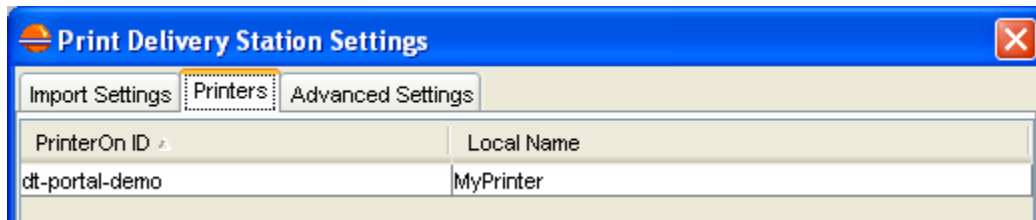
2.3 Mapping Printer Names

The PDS “server” must be able to instruct Print Release Clients where to print documents relative to the individual “client” PCs. It does so by using printer names that the PRC machines will recognize as installed Windows local or network printers. PRC deployment differs from normal PDS setup, because it does not require that the printers be connected or networked to the PDS “server” machine (unless users will be releasing jobs from the PDS computer). See Appendix A for more examples.

Figure 3.3a Example Printer Name Configuration



- Print Delivery Station must be manually configured to print to the same "printer name" that is installed on the Print Release Client machines.
- A popular setup permits users to release a print job on any available printer, which requires the use of compatible or identical models. In this case, on all of the client machines, the installed printer should all have the same name, like "MyPrinter", or "HP Laser Jet on LPT1"
- The printer name can be easily customized from the Windows Printer control panel.
- On the PDS Printers tab, set the "Local Name" to "MyPrinter" or "HP Laser Jet on LPT1". It is not necessary for that printer name to exist (or be installed) on the PDS machine.

Figure 3.3b Checking the client Windows “Printer Name”

Figure 3.3c Setting the PDS Printer Local Name


2.4 Test Your Deployment

- The Print Release Client is usually the final piece of a printing solution, and the last component to be installed and tested.
- It is recommended that printing is tested and verified as far as the PDS server prior to troubleshooting most PRC issues.
- In some configurations, it should also be possible to test the printer using PDS.

Note: Always make sure that PDS is running and configured first.

- To partially test PRC before a PDS server is available, you must disable the PRC auto-detect by typing a server URI into the configuration tool or the registry.
- Printers should be tested directly from the local Windows Printers dialog (Print Test Page), prior to using the PRC.

Note: The PrinterOn Job Reference # is not accepted by PRC to release jobs. Jobs are only printed by Release Code, or by PDS administrators.

Appendix A: Deployment Options

Figure A1: Single PC / Printer installation

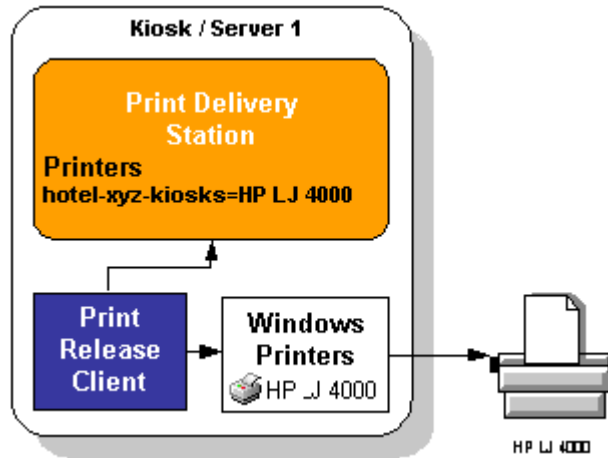


Figure A2: A large site where users can retrieve print jobs from any “printer of convenience”

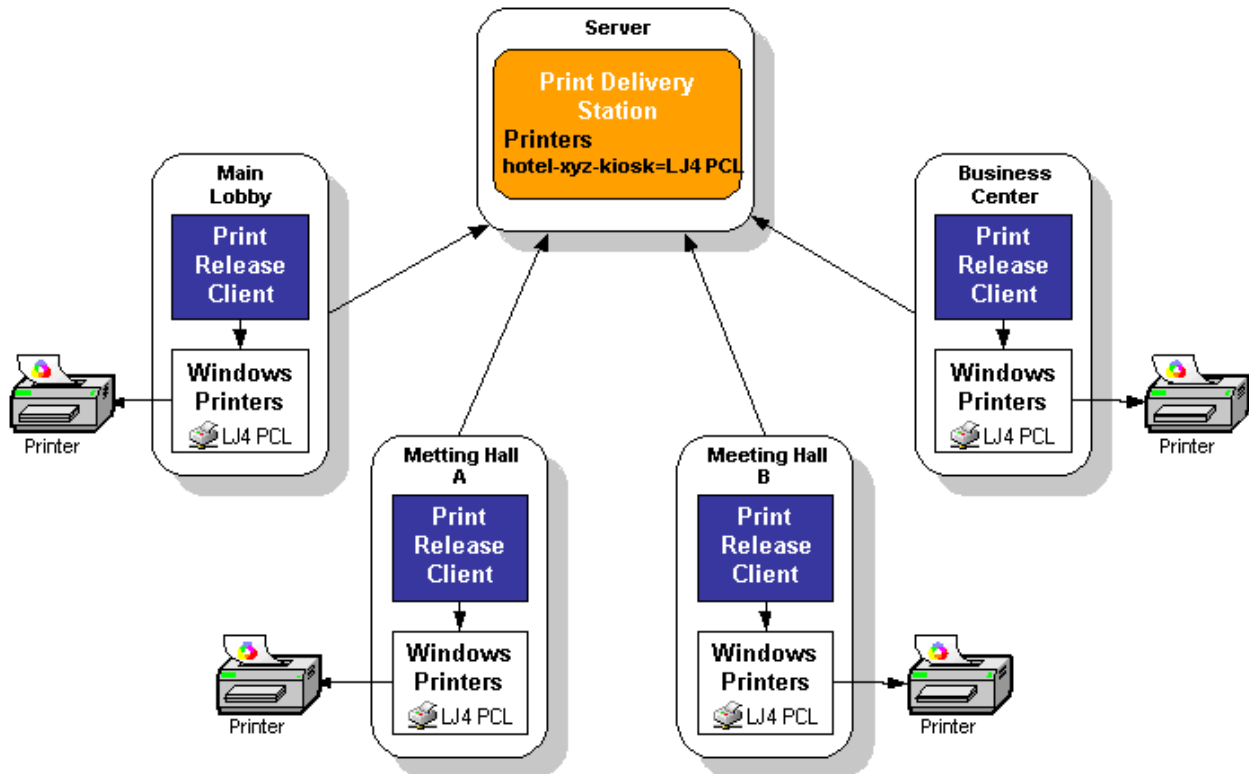


Figure A3: Sharing a color printer between multiple release stations

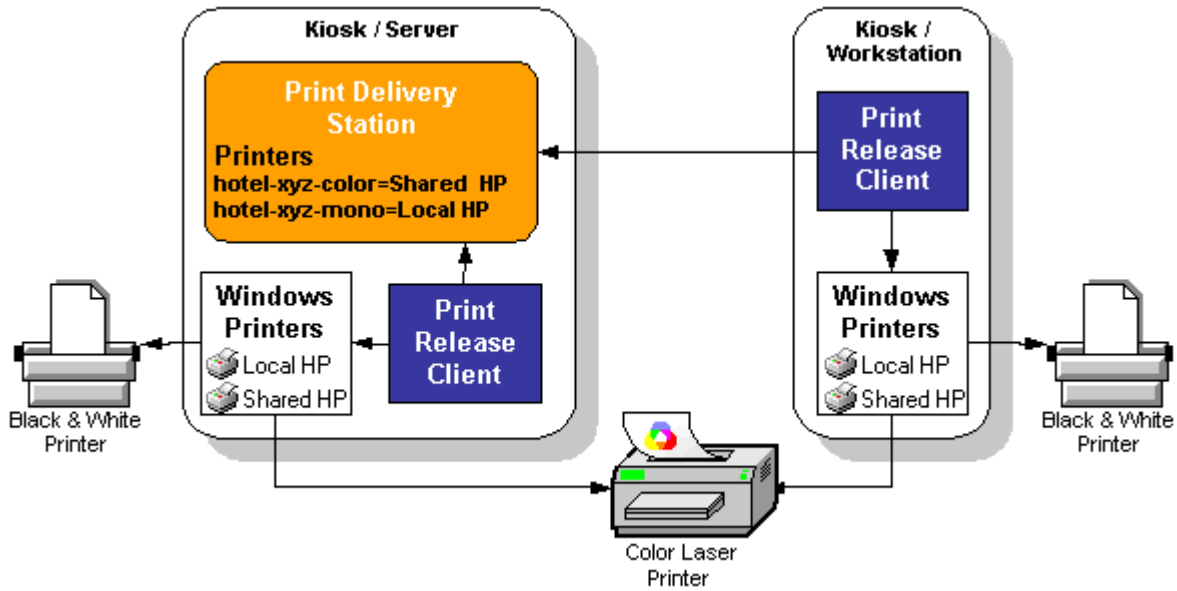
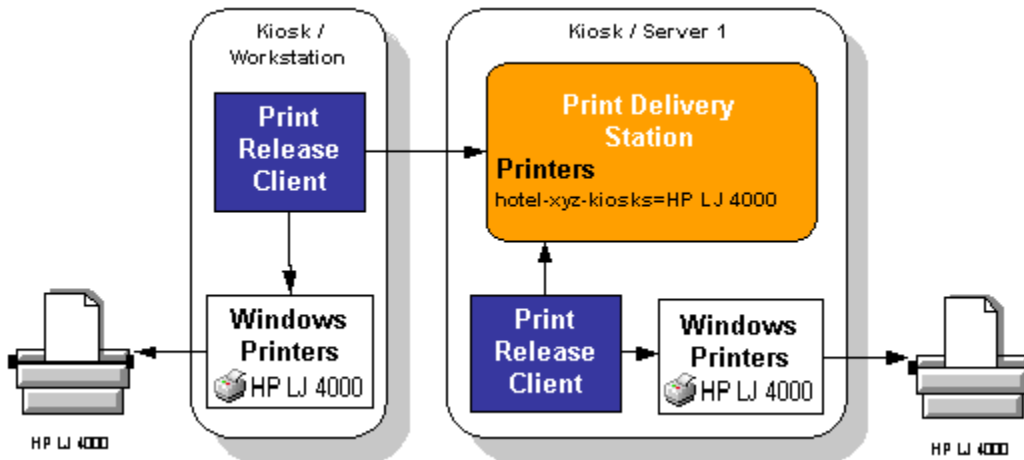
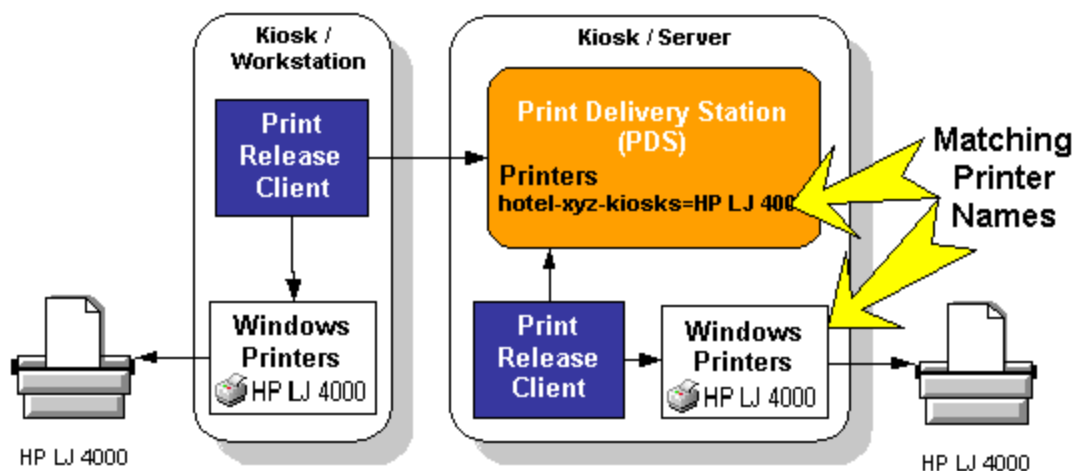


Figure A4: A common installation



Appendix B: Deployment Checklist

Figure B1: A Common Installation



Configure the PrinterOn web printing service (portal)

- Log into PrinterOn to create or manage a portal and printers and configure the portal printers to use “Release Code” as a required user input.

Install and configure Print Delivery Station (PDS)

- Download and install PDS from your PrinterOn portal management area.
- Configure the PDS printers by downloading your service’s customization file.
- Configure PDS Print Mode to “Manual Release” from the PDS “Advanced Settings – Print Processing” tab.
- Enable the PDS client API by checking the “Enable” and “Enable Focus API on these ports” boxes, on the PDS “Advanced Settings - Listener Comm.” config tab.
- Configure PDS Printer Names. Each PDS printer “Local Name” must be carefully matched to the same Windows “Printer Names” that PRC can access on the client PCs.
- Ensure that all PDS printers are configured for “General Delivery” Privacy Mode on the PDS Edit Printer dialog. This allows PRC to manage jobs using a release code.
- Optionally, add one or more PDS operators (name / password) via the “Advanced Settings - Users” tab.

Install and Configure Print Release Client (PRC)

- Locate and run the PRC Setup.exe install wizard.
- Enter the URL or IP address of the Print Delivery Station server. You must restart the PRC app after any change.
- Ensure that the PRC machine has printer(s) connected and working that match the PDS printer “Local Names”, and verify them directly using the Windows printer properties “Print test page” function.

- Test an end to end job. If no jobs are found by the PRC with your release code, try using operator credentials, or the PDS queue monitor directly.
- If PRC print jobs are not detected by 3rd party print cost recovery software, try using the PRC config tool to change the PRC print method to "Shadow Mode"