



Print Delivery Station Desktop Icon Deployment Guide

© 2009 PrinterOn Corporation

Print Delivery Station Desktop Icon Guide



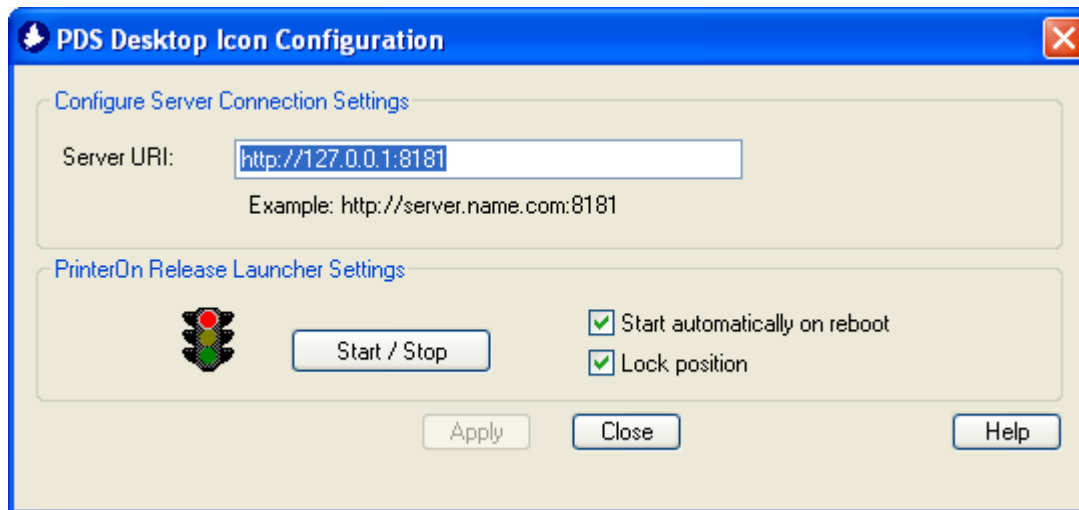
This optional icon places a button on the Print Delivery Station computer where users release their print jobs, ensuring an easy to find shortcut to your print release web page. Running as a service, the icon automatically locates the address of this web page.

To install the icon:

1. From the PrinterOn web site (www.printeron.net), download the **PDS Desktop Icon** file and save it on the Print Delivery Station computer, or on any computer on your network.
2. Once Print Delivery Station is installed, run the Desktop Icon exe file.

The button will appear on your desktop. The Icon's Configuration window (**Start>All Programs>PrinterOn Corporation>PDS Desktop Icon>Launch PDS Desktop Icon Config**), available only to Administrators of the computer, contains settings that Administrators may use to control the communication between the Icon and Print Delivery Station's print release web page. These settings are explained below.

Desktop Icon Configuration window:



Using the Desktop Icon with Print Delivery Station:

By default, under **Configure Server Connection Settings** in the PDS Desktop Icon Configuration window, the local computer's IP by will be populated. This is the IP address and port of your Print Delivery Station's Print Release web page, also referred to as the Remote Queue Monitor. Therefore, if your PDS is located on the same computer as the Desktop Icon, you do not need to change the PDS Settings in the Icon Configuration window.

To launch a PDS Print Release Page that resides on a different server:

If your PDS Print Release web page resides on a different server than your desktop icon, you can specify its address.

1. Open the PDS Desktop Icon Configuration window (Start>All Programs>PrinterOn Corporation>PDS Desktop Icon>Launch PDS Desktop Icon Config).
2. Select the **Server URI** text box.
3. Enter the IP address of your Print Delivery Station computer followed by port 8181. (i.e. `http://172.16.10.1:8181`)
4. Click Apply. Your Current Server Connection Settings will update.
5. Click Close.

To lock the position of the Icon:

By default, the Icon is configured to allow users to move it around the screen (Right-click on Icon > Left click on Move command > Drag Icon with left mouse button). Administrators may decide to disable this feature by locking the Icon's position. Once you have situated the Icon in the desired location on the screen:

1. Open the PDS Desktop Icon Configuration window (Start>All Programs>PrinterOn Corporation>PDS Desktop Icon>Launch PDS Desktop Icon Config).
2. Under PrinterOn Release Launcher Settings, check the **Lock position** box.
3. Click Apply.
4. Click Close.

To disable the Icon:

If required (such as when your service is temporarily unavailable), the Desktop Icon can be disabled (hidden) without having to uninstall it from the computer:

1. Open the PDS Desktop Icon Configuration window (Start>All Programs>PrinterOn Corporation>PDS Desktop Icon>Launch PDS Desktop Icon Config).
2. Under PrinterOn Release Launcher Settings, click **Stop**.
3. Click Apply.
4. Click Close.